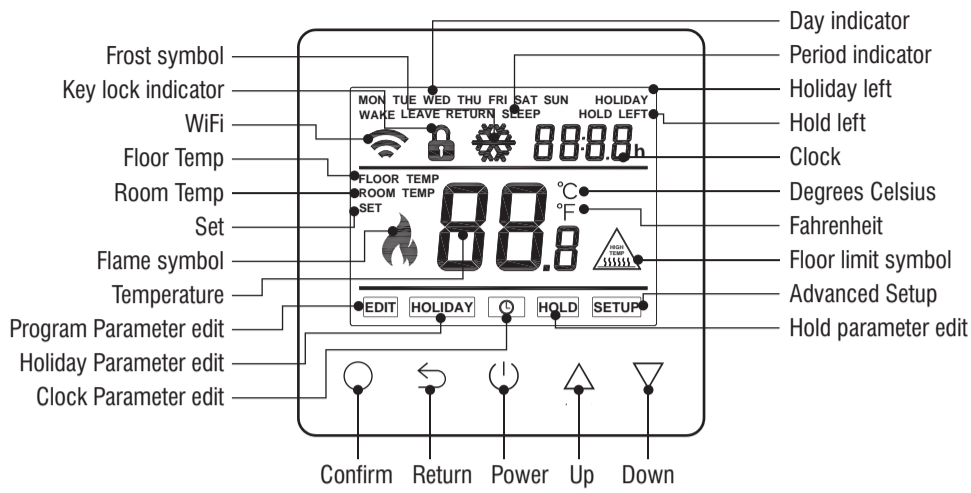


Smart Thermostat

DISPLAY SYMBOLS



Smart Thermostat

'ProTouch WiFi' app available from



01799 524730

www.ambient-elec.co.uk

THERMOSTAT DESCRIPTION

The new ProTouch WiFi is a smart thermostat used to control your electric floor heating system or water heating system. It will keep your home at comfortable temperature whilst minimizing energy use. Install the app on your smart phone to control your heating system remotely with the WiFi thermostat.



MAIN FUNCTIONS

- ✓ Power consumption monitor (in APP)
- ✓ Key-lock
- ✓ Holiday function
- ✓ Open window detection
- ✓ Time display
- ✓ Off time frost protection
- ✓ Hold function
- ✓ Floor temperature limitation
- ✓ Optimum start

THERMOSTAT DESCRIPTION

TECHNICAL SPECIFICATION
 Supply voltage: 50/60Hz 220-240V AC
 Max load: 3A
 Standby power: < 2W IP rating: IP21
 Max wire diameter: ≤2.5mm²



Smart Thermostat

INSTRUCTION MANUAL & USER GUIDE

INSTALLATION AND WIRING INSTRUCTIONS



1 Loosen fixing screw located in the bottom of the thermostat to get the front panel.



2 Connect the thermostat according to the Wiring Instruction.



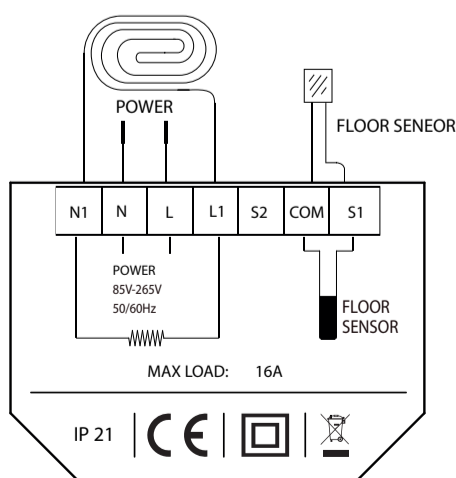
3 Insert the back panel into wall box with provided screws.



4 Align top part of front panel and back panel to fit these two parts. Then fix them with screw.

NOTE: Thermostat should be mounted in a 35mm deep single gang back box

WIRING INSTRUCTIONS



Suggestion: Please keep the max load around 90% of 16A to prolong the lifetime.

Ensure power is disconnected when wiring!

WIFI CONNECTION

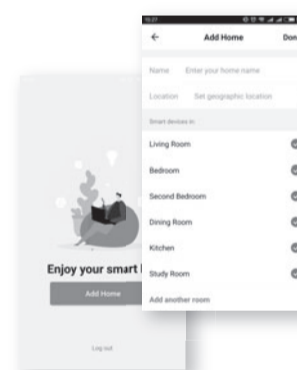
Step 1

Scan the QR code through mobile browser or download the App from APP Store or Google Play



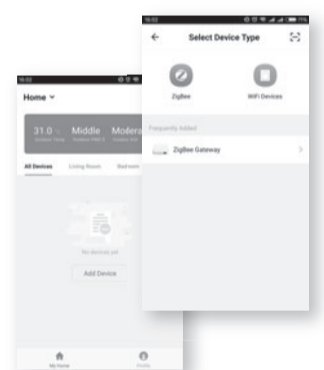
Step 2

Log in or sign up the APP through Phone No. or your Email address



Step 3

Click "Add Home", fill in the information about the Home

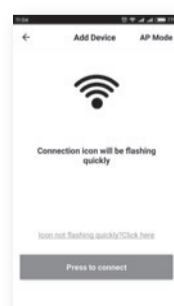


Step 4

Click "+" on the top-right corner of the screen. Then click "WiFi Devices" on the top-right corner of the screen

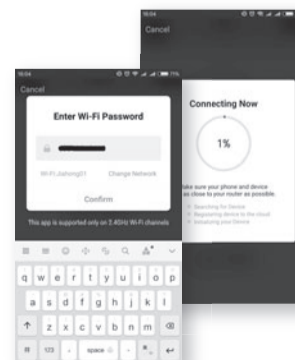


'ProTouch WiFi' app available from....



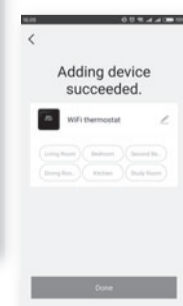
Step 5

Set the thermostat based on APP's instruction. Then click the bottom button



Step 6

Log in WiFi password and click the button to continue.



Step 7

When connection is done, Click "Done" or make a new name for your thermostat



Step 8

You can check the actual temp, change the set temp and other operations on the control interface.

FUNCTION & USER OPERATION

Press **○** to turn on/off

Note: When frost protection mode is active, the thermostat will maintain the frost protection temperature when in power 'off' mode.

Set the Time

In normal timed power 'on' mode, Press **○** and the CLOCK symbol will flash.

Press **○** again to enter day set.

Press **△** or **▽** to set day.

Press **○** to confirm and enter hour set.

Press **△** or **▽** to set hour.

Press **○** to confirm and enter minute set.

Press **△** or **▽** to set minute.

Press **○** to confirm then press **↶** to revert to normal screen.

Note: The WiFi version updates the time automatically when connected to internet.

Temporarily override temperature

In normal timed power 'on' mode, press **△** or **▽** to change the current period temperature setting. The new set temperature will flash for 30 seconds. The thermostat will revert to the normal programmed setting at the start of the next time period.

Key-lock

Setting Key-lock can prevent children and others from switching thermostat parameters. In normal timed power 'on' mode, press **↶** for 3 seconds to lock the thermostat and again for 3 seconds to cancel.

Holiday mode

The thermostat will maintain frost protection temperature until the holiday days ends.

In normal timed power 'on' mode, press **○** to enter setting.

Press **△** or **▽** to select HOLIDAY.

Press **○** to enter holiday days set.

Press **△** or **▽** to set holiday days .

Press **○** to confirm and return to the normal screen.

Note: In holiday mode, 'HOLIDAY LEFT' and the days remaining will show on display.

Set the holiday days to 0 to cancel holiday mode.

Hold mode

The thermostat will maintain the 'hold temperature' until the hold time ends.

In normal timed power 'on' mode, press **○** to enter setting.

Press **△** or **▽** to select HOLD.

Press **○** to enter hold time set.

Press **△** or **▽** to set hour.

Press **○** to enter minute set.

Press **△** or **▽** to set minute.

Press **○** to enter hold temperature set.

Press **△** or **▽** to set hold temperature.

Press **○** to confirm and return to the normal screen.

Note: In hold mode, 'HOLD' will show on display.

Set the hold time to 00:00 to cancel hold mode.

Timer setting

Each day of the week has 4 time periods,you should allot a temperature to each time period. Set the temperature above room ambient temperature and the heating will come on until the desired temperature is reached, or, set the temperature low and the heating will not come on during that time period. The default settings are shown in the table below.

In normal timed power 'on' mode, press **○** to enter setting.

Press **△** or **▽** to select EDIT.

Press **△** or **▽** to select the day to be set.

Press **△** or **▽** to select the period to be set.

Press **△** or **▽** to select start time hour.

Press **△** or **▽** to select start time minute.

Press **△** or **▽** to select temperature.

Press **○** to enter day selection.

Press **○** to enter period selection.

Press **○** to enter start time set.

Press **○** to enter minute set.

Press **○** to enter temperature set.

Press **○** to confirm and move on to next time period.

Press **↶** to revert to normal screen.

Period parameter table (Default)

Day	Wake	Leave	Return	Sleep
Mon - Fri	07:00 22°C	08:30 19°C	17:00 22°C	22:00 19°C
Sat - Sun	08:00 22°C	08:30 22°C	17:00 22°C	22:00 19°C

No.	Name	Default value	Ranges
1	Room temperature calibration	0°C	- 5°C -- 5°C
2	Floor temperature calibration	0°C	- 5°C -- 5°C
3	Frost protection mode	ON	OFF/ON
4	Frost protection temperature	5°C	5°C -- 15°C
5	Sensor selection	01: Floor sensor	00: Built-in sensor 01: Floor sensor 02: Both sensors
6	Floor temperature limit(both sensors)	30°C	20°C -- 50°C
7	Temperature unit	00: °C	00: °C 01: °F
8	Output delay	00: 00s	00: 00 s 01: 30 s 02: 60 s 03: 90 s
9	Switching Differential	01: 1.0°C	00: 0.5°C 01: 1.0 °C 02: 2.0 °C 03: 3.0 °C
10	Reverse output	00: OFF	00: ON 01: OFF
11	Schedule	00: 7	00: 7 01: 5+1+1
12	Adaptive function	01: ON	00: OFF 01: ON
13	Reset	00: No	00: No 1: YES

⚙️ ADVANCED SETTING (Please refer to table above)

Caution: These are normally set by technicians during initial installation.

In normal timed power 'on' mode, press **○** to enter setting.

Press **△** or **▽** to select SETUP.

Press **○** to enter advanced setting. Each parameter can be accessed by pressing **○** and adjust the values as required using the arrow keys. (The default values are recommended and changing these may adversely affect the way the thermostat works). Press **↶** to revert to normal screen.

Open window detection

This function only works when room sensor or both sensors is selected. The thermostat with this function will shut off automatically for 15 min when the window opens, as it can detect that the room temp plummets..

TROUBLESHOOTING

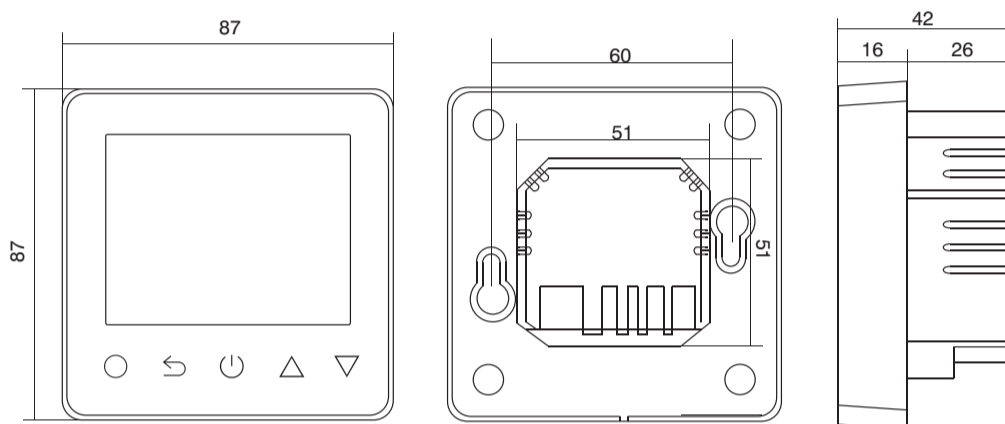
Fault Codes

E1 = Built-in sensor short-circuit or disconnected.

E2 = Floor sensor short-circuit or disconnected.

Note: Should a sensor fault display, please contact us for assistance.

DIMENSIONS (mm)



⚙️ ADVANCED SETTING

1. Room temp calibration: Calibrate the temp detected by room sensor.

2. Floor temp calibration: Calibrate the temp detected by floor sensor.

3-4. Frost Protection Mode: Frost protection allows the thermostat to turn on if the temperature drops below 5 degrees even when it is not programmed to. * displays when you turn off the thermostat.

5. Sensor selection:

00 Room sensor: Run by room sensor.

01 Floor sensor: Run by floor sensor.

02 Both sensors: Run by room sensor with floor temp limit.

6. Floor temp limit: If you choose both sensors, floor temp limit must be set to protect floor.

7. Temp unit: °C and °F can be selected.

8. Output delay: This option help you avoid inadvertent operation on heating.

9. Switching Differential: The number of degrees the temperature has to change before the unit switches on/off. The default is 1 degree so if the temperature is set to 21 degrees the thermostat will switch on at 20.5 degrees and off at 21.5 degrees. 0.5 degrees either side of 21.

10.Reverse output: This function works for the cooling system. When the temp is 1°C higher than set temp, the thermostat will disconnect the cooling system. otherwise, it will connect the cooling system.

11. Schedule: Select a weekly schedule for the Edit. There are 2 options:

7: each day from Mon to Sun can be set individually.

5+1+1: 5 days from Mon to Fri have the same events, Sat and Sun can be set individually.

12. Adaptive function: After several days of installation and use, Adaptive function ensures that the required temp has already been reached when the next event begins.

13. Reset: All parameters are restored to default values.

Notes
